


Յն-դ-ձ

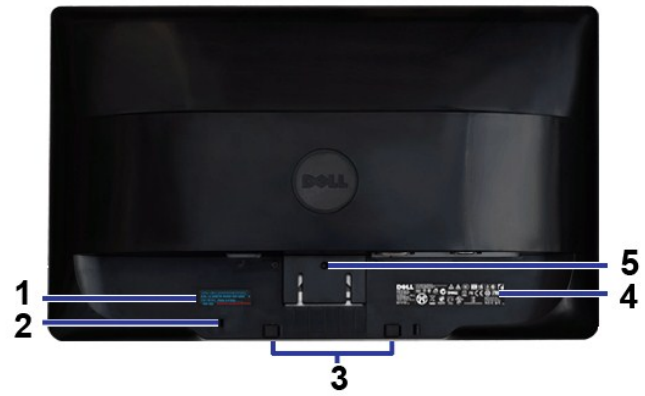
Գնման Գույք – Dell™ ST2420L/ST2421L

- [Նկարագրիչ](#)
- [Բնութագրիչ](#)
- [Բնութագրիչ](#)
- [Նկարագրիչ](#)
- [Նկարագրիչ](#)
- [Նկարագրիչ](#)
- [Նկարագրիչ](#)
- [Նկարագրիչ](#)

Նկարագր

Տեղեկությունները և պատկերները [Dell](#) կայքի վրա հասանելի են: Նկարագրիչը և պատկերները կարող են փոփոխվել առանձին առանց հաճախորդի նախազգուշացման: Գնման օբյեկտի նկարագրիչը և պատկերները կարող են փոփոխվել առանց հաճախորդի նախազգուշացման: 

Գնման օբյեկտ	
Մոդել	
DVI (DVI) Կապակցություն	
VGA Կապակցություն	

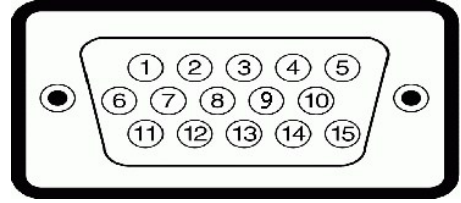


---/---

DELL
Dell Soundbar
Dell Soundbar
Dell Soundbar

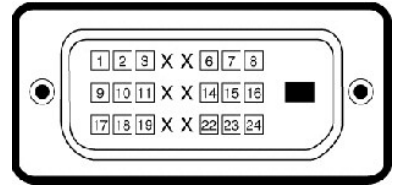
1
2
3
4
5





Pin	Signal	Order
1	Resp	1
2	s	2
3	Pin	3
4	GND	4
5	AMB0	5
6	GND-R	6
7	GND-G	7
8	GND-B	8
9	3.3V	9
10	GND	10
11	GND	11
12	DDC	12
13	SP	13
14	RS	14
15	DDC	15

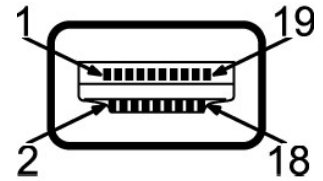
DVI



Pin	Signal	Order
1	-TMDS RX2	1
2	+TMDS RX2	2
3	TMDS	3
4	X	4
5	X	5
6	DDC Clock	6
7	DDC Data	7
8	X	8
9	-TMDS RX1	9
10	+TMDS RX1	10
11	TMDS	11
12	X	12
13	X	13
14	5V+	14
15	AMB0	15
16	(RS) "RS"	16
17	-TMDS RX0	17

+TMDS RX0	18
TMDS p s e n	19
	20
	21
TMDS p s e n	22
+TMDS Clock	23
-TMDS Clock	24

HDMI e™W



—e n N O m N R s e C C p n 1 9 r s	u C P P W
+TMDS DATA 2	1
TMDS DATA 2	2
-TMDS DATA 2	3
+TMDS DATA 1	4
TMDS DATA 1	5
-TMDS DATA 1	6
+TMDS DATA 0	7
TMDS CLOCK	8
-TMDS DATA 0	9
TMDS CLOCK	10
TMDS CLOCK SHIELD	11
-TMDS CLOCK	12
CEC	13
(n s e C) - W	14
(DDC CLOCK (SCL	15
(DDC DATA (SDA	16
DDC/CEC p s e n	17
5V+ " W	18
(W M D W) " R S " D s e I C	19

R s e W " - e o s

2420L/ST2421L	R s
CD - C e s e p B e W	G W e T
TN	N e p e T
24 W " T 60.97	G W e W
20.92 W " W 531.36	: e W n e - W p C C P B " e
11.77 W " W 298.89	W e

2420L/ST2421L

R01

0.7 : 0.7 RGB
 50 ohm 50 ohm
 HDMI, 600mV
 0.7 : 0.7

analog - T01 - a

RGB - 0.7 : 0.7

RGB - 0.7 : 0.7

240 : 100

RS' - 0.7 / AC T01 - W

) PW 30 : 120

iso RJ45 RS' N - W

) PW 60 : 240

REVISION

2420L/ST2421L

R01

N : D-sub 1
 DVI-D 1
 HDMI 1

0.7 - T

S : D-sub 1

0.7 - T

DVI-D 1

HDMI 1

(HDMI) R01

16.47 W 418.24

16"

22.64 W 574.96

22"

8.02 W 203.68

8"

(HDMI) R01

14.03 W 356.43

14"

22.64 W 574.96

22"

2.35 W 59.72

2.35"

REVISION

5.90 W 149.85

5.9"

8.02 W 203.68

8"

8.02 W 203.68

8"

0.7 - T

12.68) e" s 5.75

12.68" x 5.75"

9.46) e" s 4.29

9.46" x 4.29"

8.05) e" s 3.65

VESA K01 - a 0.7 : 0.7, RJ45 (N - s) RJ45 N - W (R01)

1.41) e" s 0.64

1.41" x 0.64"



(- P) Language
 (- P C s) Menu Transparency
 (B J , n - J , e C P) Menu Timer
 (n N C J , K e C P) Menu Lock
 DDC/CI
 LCD Conditioning



(n J , - s " n K - W W W J n) LCD Conditioning

MESSAGE

Dell ST242XL

This feature will help reduce minor cases of image retention. Depending on the degree of image retention, the program may take some time to run.

Do you want to continue?

No

Yes

LCD Conditioning is currently in progress. Press any button on the monitor to terminate LCD Conditioning at any time.

... (Arabic text) ...

... (Arabic text) ...

(F5) Factory Reset

(F4) Back

... (Arabic text) ...

(F2) Personalize



Dell ST242XL

contrast	Shortcut key1	▶ Preset Modes
	Shortcut key2	▶ Brightness/Contrast
s		
gs		
s		
s		
20x1080@60Hz		

(OSD) ... (Arabic text) ...

: ... (Arabic text) ...


Dell ST242XL

t supported by the monitor display.
ing to 1920x1080@60Hz or any other monitor
or specifications.

MESSAGE

Dell ST242XL

The current input timing is not supported by the monitor display.
Please change your input timing to 1920x1080@60Hz or any other monitor
listed timing as per the monitor specifications.



Dell™ ST2420L/ST2421L monitor

www.dell.com

(34") 1920x1080 Resolution (16:10) 24" (610 mm) wide

© 2010 Dell Inc. All rights reserved.

Dell™ Inc. 11500 Dallas Pkwy, Austin, TX 78758

ENERGY STAR is a logo of the U.S. Environmental Protection Agency. Microsoft Corporation, Windows, Dell Inc., Microsoft, Dell, ENERGY STAR, and the ENERGY STAR logo are trademarks of their respective owners.

ST2420L/ST2421L is a trademark of Dell Inc. © 2010 Dell Inc. All rights reserved.

ST2420L/ST2421L

Rev. A00 2010

የቅንብ ጥራት

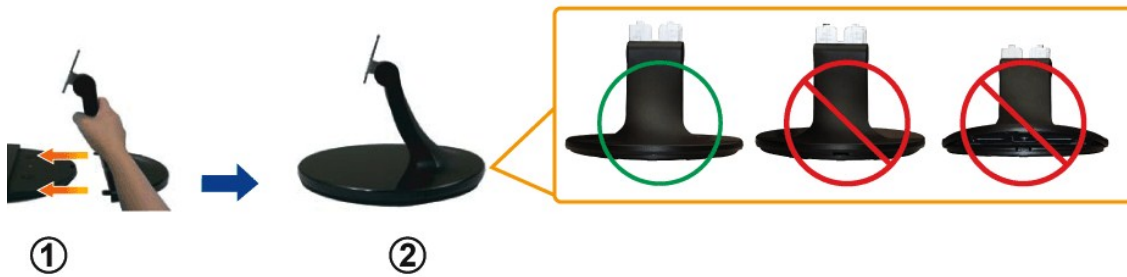
www.dell.com - Dell™ ST2420L/ST2421L

- [የቅንብ ጥራት](#)
- [የቅንብ ጥራት](#)
- [የቅንብ ጥራት](#)
- [የቅንብ ጥራት](#)

የቅንብ ጥራት

የቅንብ ጥራት ለማረጋገጥ የሚያስፈልጉትን ስራዎች ይከተሉ፡

1. የቅንብ ጥራት ለማረጋገጥ የሚያስፈልጉትን ስራዎች ይከተሉ፡



2. የቅንብ ጥራት ለማረጋገጥ የሚያስፈልጉትን ስራዎች ይከተሉ፡



3. የቅንብ ጥራት ለማረጋገጥ የሚያስፈልጉትን ስራዎች ይከተሉ፡



4. የቅንብ ጥራት ለማረጋገጥ የሚያስፈልጉትን ስራዎች ይከተሉ፡

.WWW n@ON Soundbar -n@ON n@NnTn 1 .@ON n@N N -sn WB-@,a@en 1 .@N Rs@N Windows NN -sn WB-@, @sPNna@-m 1 .@N Rs-@N N -sn WB-@,a@en 1 .(n@Rs@Nok ,n@N) "a N-s-s@Rs@, Soundbar -n @ s-n@ 1	@Nn-WKN-WB-@,	n-WKN-WB-@,
--	---------------	-------------
